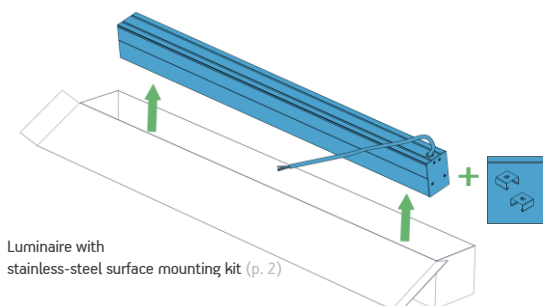


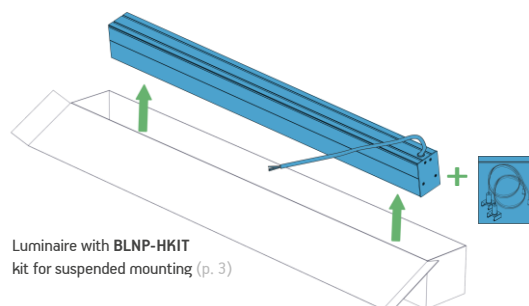
GULL LUMINAIRES INSTALLATION GUIDE

READ THE INSTRUCTIONS CAREFULLY BEFORE STARTING

INSIDE THE BOX

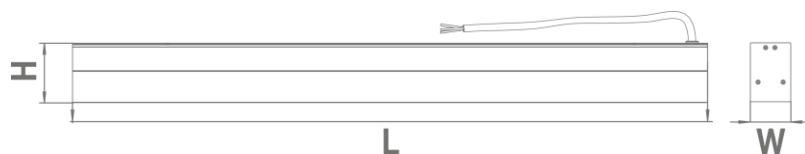


Luminaire with stainless-steel surface mounting kit (p. 2)



Luminaire with BLNP-HKIT kit for suspended mounting (p. 3)

NEEDED FOR MOUNTING



L, mm	W, mm	H, mm
1200	57.5	75

WARNING

! Turn power off before inspection, installation or removal.

- Properly ground electrical enclosure.
- Perform installation in dry location only.
- Luminaire may fall down if not installed properly.
- Avoid direct eye exposure to the light source while it is on.
- For indoor use only.
- Do not operate luminaire with damaged parts.
- To prevent wiring damage or abrasion, do not expose wiring to edges of sheet metal or other sharp objects.

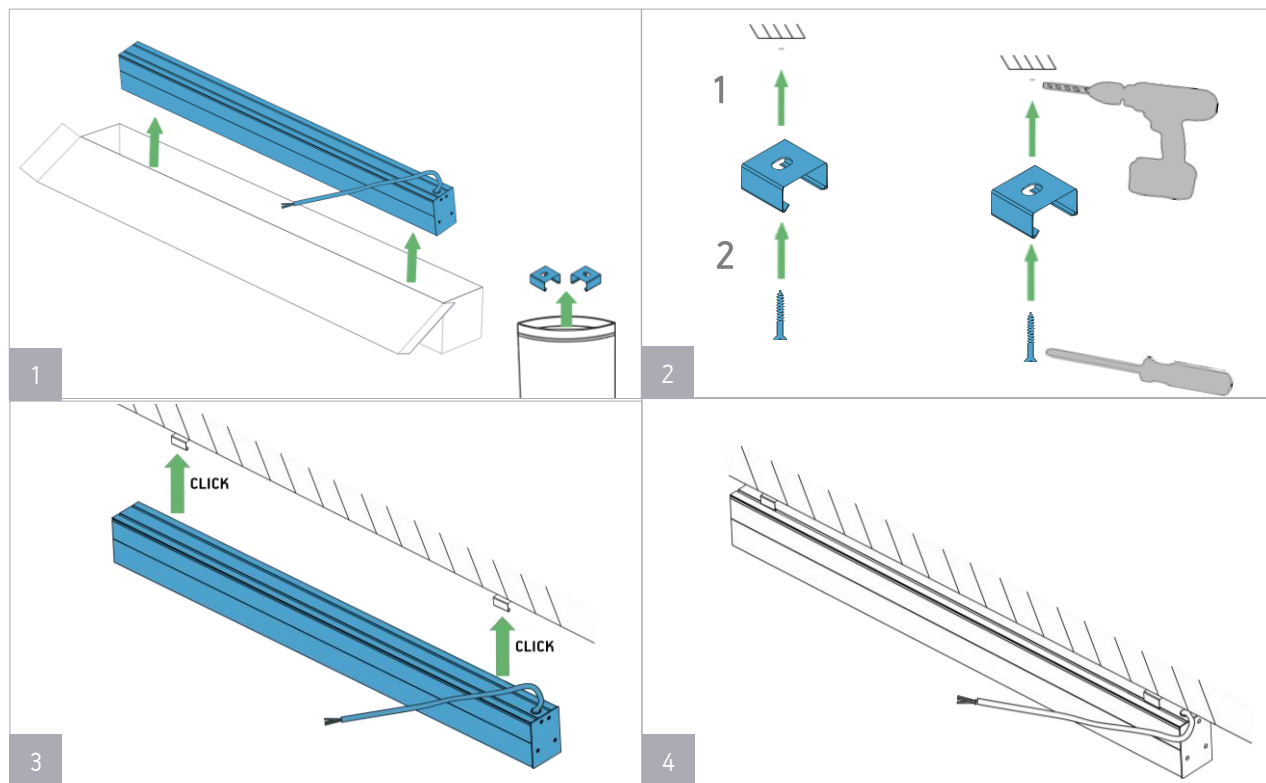
- The manufacturer shall not be liable for any damage resulting from inappropriate modifications to the luminaire or faulty installation.

If you have any questions, contact the manufacturer.

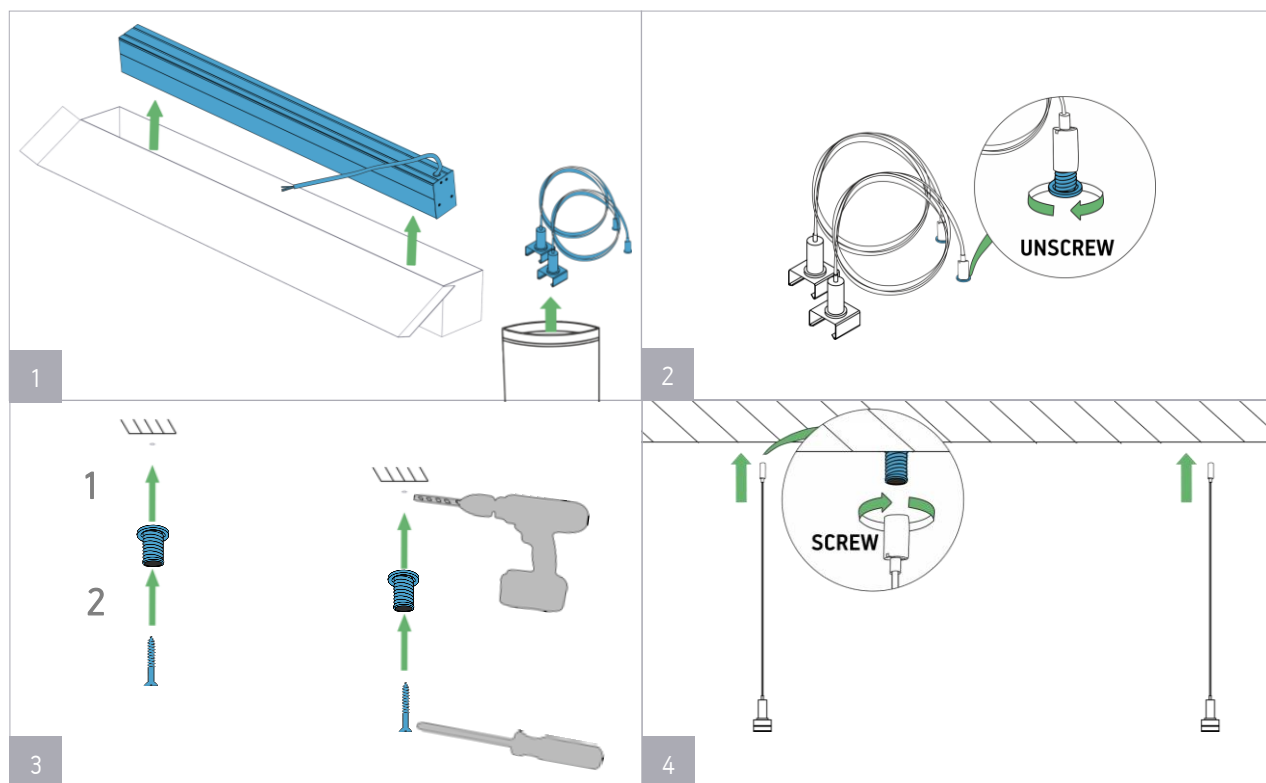
GULL LUMINAIRES INSTALLATION GUIDE

1. MOUNTING

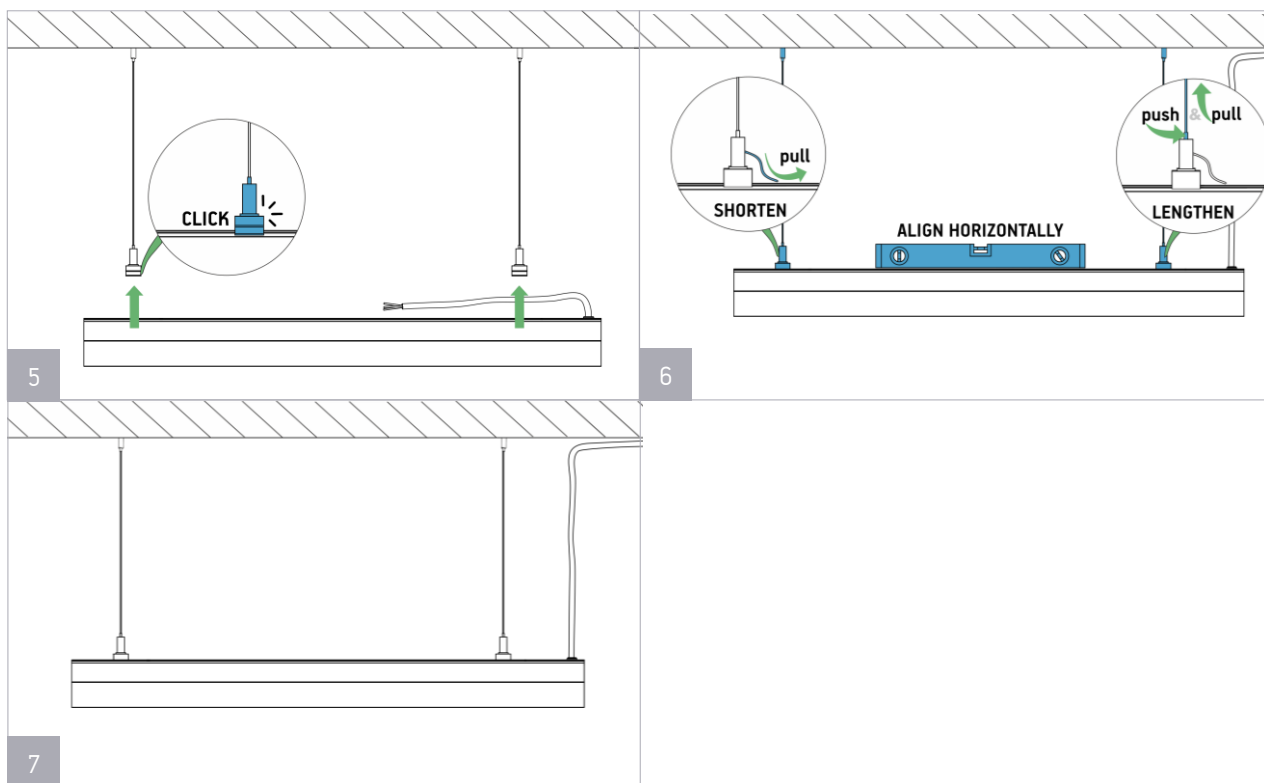
1.1. SURFACE MOUNTING



1.2. SUSPENDED MOUNTING

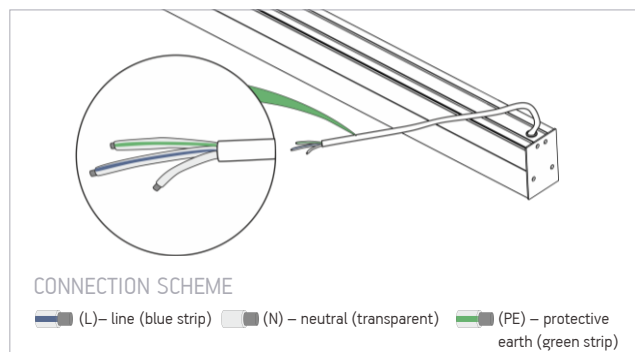


1.2. SUSPENDED MOUNTING

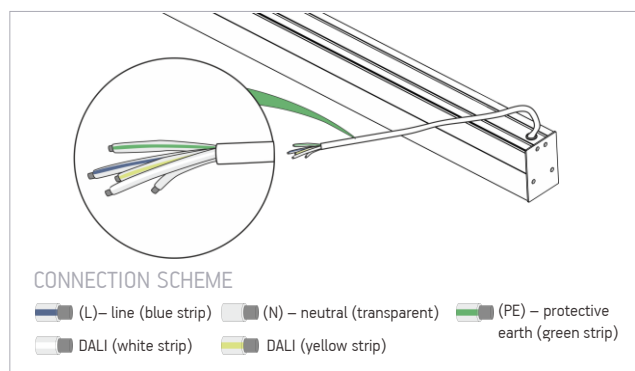


2. CONNECTION

2.1. STANDARD CONNECTION



2.2. DALI CONNECTION



QUANTITY OF LUMINAIRES PER CIRCUIT BREAKER

SKU	LUMINAIRE QTY PER 16A TYPE C CIRCUIT BREAKER
BLNP-U-120A90840P20	
BLNP-U-120A90840P20-DA	
BLNP-U-120A90840P24	
BLNP-U-120A90840P24-DA	
BLNP-U-120A90840P28	
BLNP-U-120A90840P28-DA	
BLNP-M-120A120840P20	
BLNP-M-120A120840P20-DA	
BLNP-M-120A120840P26	
BLNP-M-120A120840P26-DA	
BLNP-M-120A120840P32	
BLNP-M-120A120840P32-DA	